

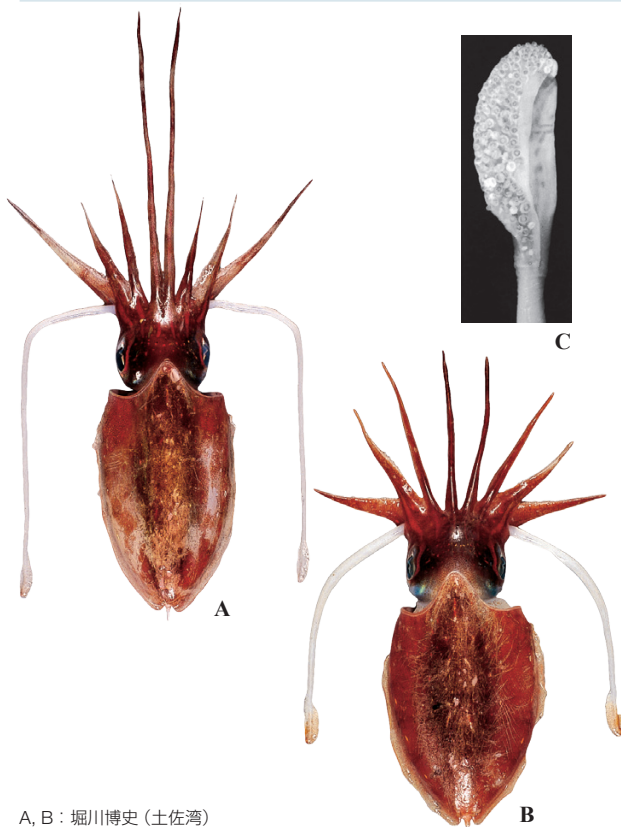
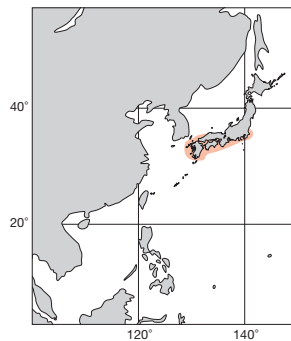
A, B: 堀川博史 (土佐湾)

日本近海 Japanese Waters

ML 10cm. 背側は赤褐色。腹面も淡褐色。II・III腕の先端は急に細まり、そこは吸盤が2列になる。雄では第I腕が延長し、外套長の1.3倍を超す。この腕も基部寄り半分の吸盤は4列で、先端の方は2列となる。触腕掌部は半月形で、等大の吸盤が約130個、8列に並ぶ。貝殻は *Doratossepion* 型で比較的薄く、幅は長さの20% (♂)~22% (♀)。常盤海域以南九州など日本南西部の水深100~250m。

Small sepiid with brownish red dorsal side and pale brown ventral surface. Arms II and III abruptly attenuated distally where only two rows of suckers are present. Arm I of male elongated as long as over 1.3 times ML. This arm with four rows of suckers proximally, but two rows in elongated distal portion. Tentacular club crescent with about 130 suckers in eight rows. Shell *Doratossepion*-type, rather flat, SW 20% (♂) to 22% (♀) of SL. Occasionally trawled from a depth of 100-250m in the southwestern Japan.

[A. 背面 (♂96mm) : B. 背面 (♀88mm) : C. 触腕]



A, B: 堀川博史 (土佐湾)

日本近海 Japanese Waters

ML 90mm. 外套幅は外套長の50 (♂)~55% (♀)。背側は褐色で貝殻の縁に相当する部分は暗色。雄の第I腕が延長し、外套長の1.5倍に及ぶが、細まったところの吸盤は2列50対以上あり同時に吸盤柄は膨む。II・III腕の先端は細まるがウデボソコウイカのように急激でなく吸盤は先端まで4列ある。触腕掌部は半月型で約130個の吸盤が8列に並ぶ。貝殻は *Doratossepion* 型で幅は長さの23~28%。付記：本種はウデボソコウイカと同所的に駿河湾~土佐湾の水深150~300mで採集されるが、雄のI腕延長部分は本種では触腕より長く伸び、II・III腕が急激に細まらず、貝殻最大幅が本種では前から36~37%にあり、ウデボソコウイカでは25~30%にあることで区別される。

Small sepiid with MW 50% (♂) to 55% (♀) of ML. Dorsal surface brownish with darker zone along shell. Arm I of male elongated, 1.5 times of ML. Attenuated portion with double row of suckers with swollen pedicels. Arms II and III also attenuated but more gradually than in *S. tenuipes*. Tentacular club crescent, with about 130 suckers in eight rows. Shell *Doratossepion*-type, SW 23-28% of SL. Sympatric with *S. tenuipes*. at about 150-300m depth around Suruga Bay to Tosa Bay, but easily separable by its longer prolongation of Arm I in male, gradual attenuation of other arms. The widest portion of the shell in this species situated at anterior 36-37%, while that in *S. tenuipes*. at 25-30%.

[A. 背面 (♂83mm) : B. 背面 (♀88mm) : C. 触腕]

