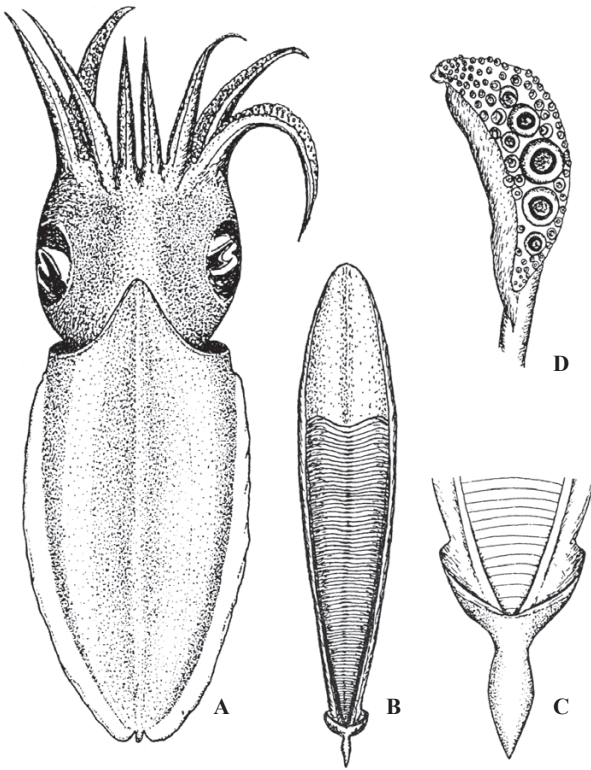


南アフリカ South Africa

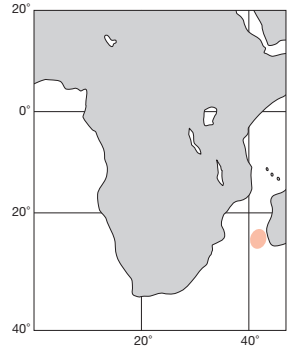
ML 60mm. 外套膜は卵円形。I腕は短い。雄のIV腕の先端は半月型に広がり、曲がる。触腕吸盤は5列で、中央列の3個が著大で、数個は中大。貝殻は細長く *Doratossepion* 型で、腹面に浅い縦溝が走る。横線面の前縁は浅いM字型。内円錐は外円錐に癒着する。外円錐は盃状。棘は中太りの紡錘形。マダガスカル、タラ岬沖。

Mantle oval. Arm I short. Distal end of Arm IV crescent-shaped, widened and curved. Tentacular suckers in five rows. Three suckers in mesial row enlarged with several medium-sized ones. Shell elongate, *Doratossepion*-type. A shallow furrow running longitudinally on ventral side. Locular boundary M-shaped. Inner cone fused with outer cone, which is cup-shaped. Spine spindle-shaped. Madagascar, off Cape Tala.

[A. 背面 (♂59mm) ; B. 貝殻腹面 ; C. 同後端部 ; D. 触腕]



A-D : Khromov et al. (1991)

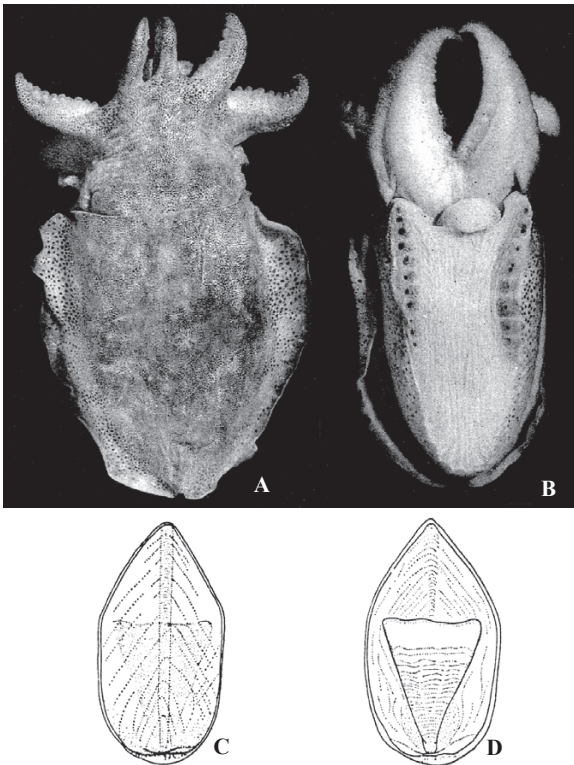


南アフリカ South Africa

ML 26mm. 外套膜は卵円形。背面には疎らな疣状突起があり、貝殻の部分は暗色の菱形を示している。腹面の前半には鰭基底に沿い肉質の隆起が走り、その上に5~15 (通常10~12) 個の孔があいている。腕は短く外套長の1/2以下。腕吸盤は全て2列。交接腕 (雄左IV腕) は9~13対の縮小吸盤がある。触腕吸盤は6列でほぼ等大。貝殻は石灰化せず脆弱。隔壁域 (phragmocone) は短く、三角形。内円錐は不明瞭で外円錐は広い。南アフリカ~モザンビーク南部、水深2~250m。

Small species. Dorsal mantle scattered with tubercles. Dark diamond patch present in position of shell. Anterior half of ventral mantle with fleshy ridge along fin base, on which 5-15 (usually 10-12) pores are present. Arm shorter than half of ML, with biserial suckers. Hectocotylized arm (male left Arm IV) with 9-13 pairs of reduced suckers. Tentacular suckers subequal in six rows. Shell not calcified, fragile, with short, triangular phragmocone. Inner cone indistinct, but outer cone broad. Southern Mozambique to South Africa, 2-250m depth.

[A. 背面 (♂20mm) ; B. 同腹面 ; C. 貝殻腹面 (19.5mm) ; D. 同背面]



A, B : Adam & Rees (1966) , C, D : Roeleveld (1972)

