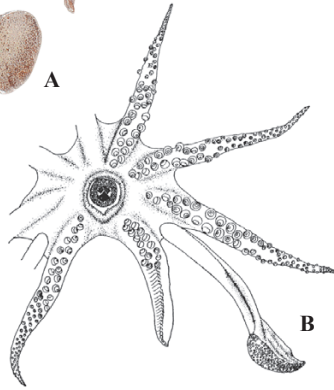




A



B

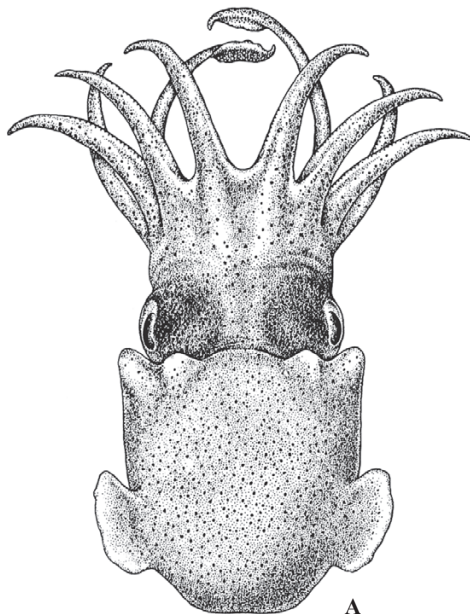
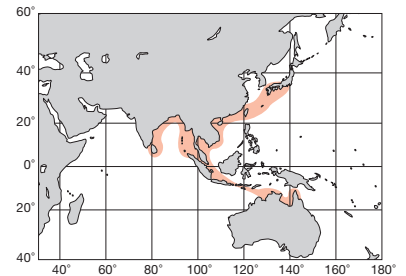
A : 堀川博史 (土佐湾)

FAO 名 (英) : Koch's bottletail cuttlefish

ML 20mm. 外套膜は短く丸いドーム型。前背縁は外套幅の1/4の長さで頭部と癒着している。鰭は丸い。外套膜と漏斗は靱帯で癒着している。腕吸盤は基部寄り2列で先端20列ぐらいは4列。雄左IV腕は交接腕化し先端2/3は肉稜列となっている。触腕吸盤は8列密に並ぶ。体全背面に橙色小斑を散らす。貝殻を欠く。日本中部以南、インドネシア、インド沿岸の浅海。

ML about 20 mm. Mantle short, dome-shaped with round fins. Anterior margin of mantle fused with head at length of quarter of MW. Mantle and funnel permanently fused by ligament. Arm suckers biserial proximally, but becoming quadriserial in some 20 rows distally. Left Arm IV of male hectocotyized with fleshy lamellae at distal two-thirds of arm length. Tentacular club with eight rows of densely-set suckers. Spotted with orange dots all over dorsally. No shell present. Middle Japan, southward to Indonesia and Indian coast, shallow water.

[A. 背面 (♂21mm) ; B. 口面]



A

A : Lu (Hollis) (1998)

ML 12.3mm. 外套長と幅とがほぼ等しい。腕はほぼ外套長と等長。腕吸盤は初め2列であるが、中程から4列になり、先端部では微小。交接腕の基部には10対の吸盤があるが、1列の尖った舌状乳嘴に代わり、先端部では2列となる。触腕吸盤は6列。

付記：概形は前種に似るが、交接腕の変形部は肉稜状にならず円錐型の乳嘴列になる。また触腕吸盤は6列。オーストラリア南岸。

ML nearly equal to MW. Arms subequal to ML. Arm suckers biserial proximally, but becoming quadriserial from middle to distal, where they are minute. Hectocotyized arm with ten pairs of normal suckers proximally, then modified into a single row of pointed tongue-like papillae, which become a double row at distal portion. Tentacular club suckers in six rows. This species is similar to the preceding species, but differs in having a single row of conical papillae in hectocotyized arm instead of fleshy ridges in *S. kochi*. Also, club suckers are in six rows. Southern Australia.

[A. 背面]

