

**ワタゾコボウズイカ** *Rossia (Allorossia) mollicella* Sasaki, 1920 / ダンゴイカ科 Sepiolidae



A



B

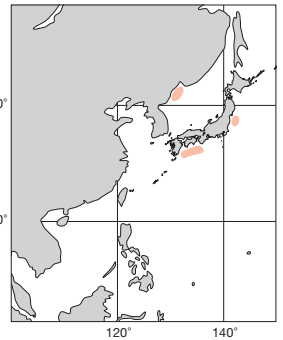
A, B: 窪寺恒己 (駿河湾)

**日本近海 Japanese Waters**

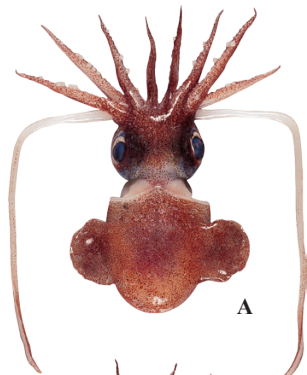
ML 36mm. 外套膜はドーム型で、幅は長さに近い、柔かく濃紫褐色。前背縁は鈍角。鰭は大きく外套長の2/3に及ぶ。頭部も大きくよく膨れる。頸軟骨は短い小判型。腕吸盤は2列。雄の両I腕が交接腕化し、側面に溝が生じる。触腕掌部は曲り、約8列に微小吸盤が密生する。軟甲の長さは幅の約9倍。翼状部は細長い菱形。金華山沖から土佐湾・日向灘及びビーター大帝湾の漸深海底から知られる。

Deepsea bobtail squid with soft body of deep purple in color. Mantle dome-shaped, MW nears ML. Anterior mantle lobe obtuse. Fins large, attaining two-thirds of ML. Head globular. Nuchal cartilage short, elliptical. Arm sucker biserial. Both Arms I of male hectocotylized with lateral groove. Tentacular club curved, with numerous minute suckers in about eight rows. Gladius nine times longer than wide. Vane elongate rhombic. Bathyal depths off Kinkazan southward to Tosa Bay and the Sea of Hyuga-Nada, as well as Peter the Great Bay.

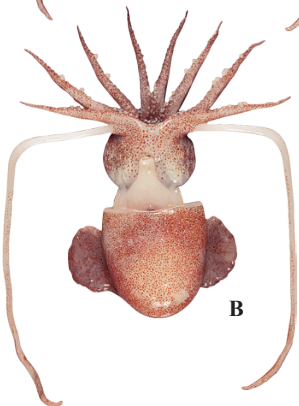
[A. 背面; B. 腹面]



**ヤワラボウズイカ** *Austrorossia bipapillata* (Sasaki, 1920) / ダンゴイカ科 Sepiolidae



A



B



C

A, B: 堀川博史 (土佐湾)

**日本近海 Japanese Waters**

FAO名(英): Big-eyed bobtail squid

ML 50mm. いわゆるミミイカ型で、外套幅は外套長の70-80%、背側前端は鈍い三角状になる。腕の吸盤は2列。触腕掌部は殆ど拡大せず吸盤は顕微鏡的で凡そ24列ほど不規則に並ぶ。直腸終端に1対の乳嘴状突起をもつ。ボウズイカとは頸軟骨が小判型である点(ボウズイカでは後方へ細まる)と触腕の様式が異なる点で区別される。駿河湾~土佐湾の陸棚下帯に比較的多い。台湾・フィリピンからも知られた。

MW 70-80% of ML. Anterior mantle margin bluntly triangular. Arm suckers biserial. Tentacular club barely expanded with microscopic suckers in about 24 irregular rows. Pair of papillated projection present near anus. It is separable from *R. pacifica* in having oval nuchal cartilage (tapering in *R. pacifica*), and different configuration of tentacle. This species is rather common in lower shelf in Suruga Bay to Tosa Bay. Occurrences of the Philippines and Taiwan are available.

[A. 背面(♀51mm); B. 同腹面; C. 触腕]

