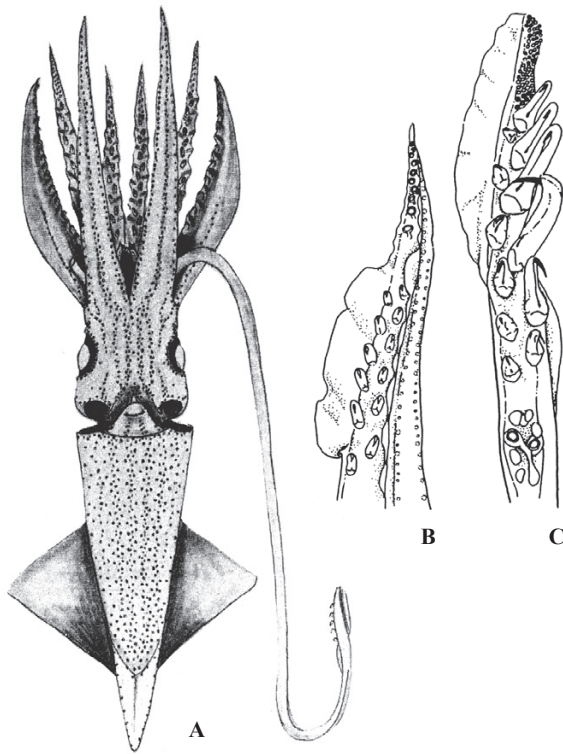
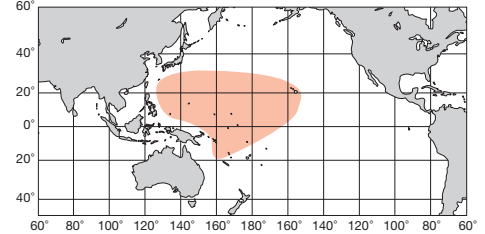


太平洋 Pacific Ocean

ML 70mm. 外套膜後端は長いゼラチン質の長い尾で終わる。腹面の発光器は8列の縦帯状に配列するが不明瞭。頭部腹面には1対の細長いリング状の発光器列をもち、腕の腹側にも複数の発光器からなる明瞭な列を作る。鰭長・幅とも外套長の75%前後。腕には2列16~32個の鉤と16~33個の小吸盤をもつ。雄右IV側の腕先端が交接腕化し長く広い矩形の膜状片と短い半月形の膜片がある。触腕は長く、掌部に2列10~12個の背腹列で大きくサイズの異なる鉤列とその先に4列の吸盤をもつ。眼球の腹面に9個の発光器をもつ。熱帯北西~中央太平洋, ハワイ。

Mantle terminated in long gelatinous tail. Ventral mantle ornamented by indistinct eight rows of photophores. Ventral head with elongated ring-like photophore rows. Ventral surface of arms also with multiseiral photophore rows. Both fin length and width about 75% of ML. Arms with 16-32 hooks and 16-33 distal suckers in two rows. Male right Arm IV hectocotylized with elongate rectangular and lunate flaps. Tentacle long, manus with 10-12 hooks in two rows, and dactylus with quadriseiral suckers. Eyeball with nine photophores. Tropical Northwest to Central Pacific.

[A. 腹面 (♀45 mm); B. 交接腕; C. 触腕]



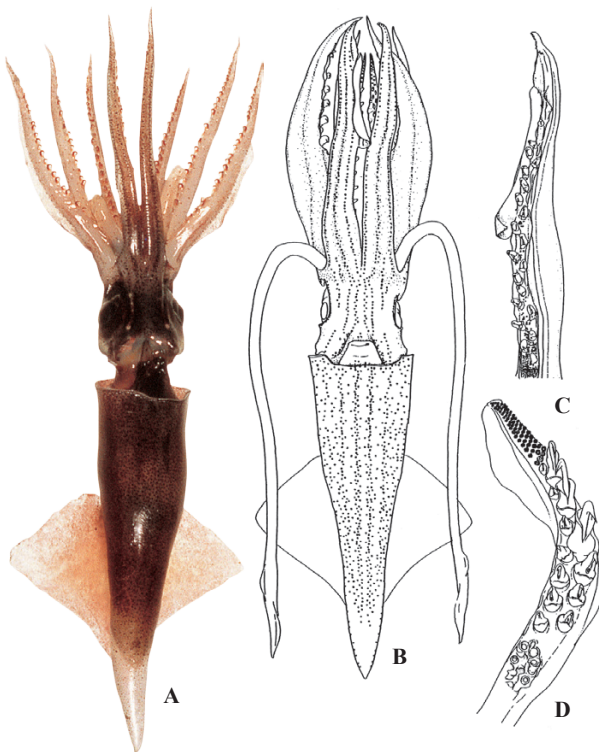
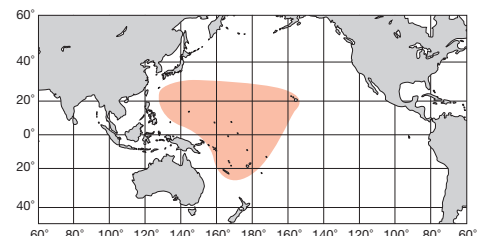
A: Burgess (1982). B, C: 土屋 (2000)

太平洋 Pacific Ocean

ML 10cm. 外套膜は後方はゼラチン質の尾部で終る。鰭の長さは外套長の60~70%, 幅は65~80%。腹面の発光器は6縦列。眼球の発光器は9個, 何れも僅かずつ離れる。腕には14~31個の鉤と小吸盤がある。雄のIV腕が交接腕化し, 腹側に2片, 背側に1片の半月膜がありこのうち腹側基部寄りのものは大きく重方形。触腕掌部には5~7対の鉤列があるが, 腹側列が強い。固着器は円型, 先端部吸盤は4列。熱帯北西~中央太平洋。付記: ホタルイカモドキ *E. chunii* とは, 頭部腹面の発光器が本種では不顕著な6列, ホタルイカモドキは明瞭な5列なので直ちに区別し得る。

Ventral mantle with six rows of photophores. Eyeball with nine photophores slightly apart from each other. Arms with 14-31 hooks and distal minute suckers. Male right Arm IV hectocotylized with two ventral flaps and single dorsal lunate flap, of which ventral proximal one is the largest of all and subquadrate in shape. Tentacular club with 5-7 pairs of hooks, those of ventral row stronger than dorsal ones. Fixing apparatus discoidal and dactylus suckers in four rows. This species is easily separable from *E. chunii* in having indistinct six rows of head photophores instead of five distinct rows in *E. chunii*. Tropical Northwest to Central Pacific.

[A, B. 腹面; C. 交接腕; D. 触腕]



A: 田川 勝 (沖ノ鳥島). B-D: 土屋 (2000)