

A-C : Tsuchiya (1991)

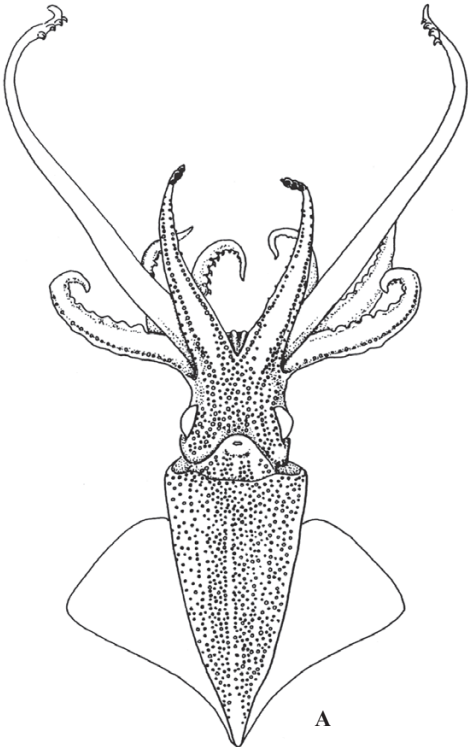
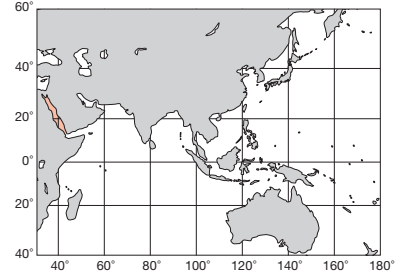
インド洋 Indian Ocean

ML 35mm. 外套膜腹面の発光器は縦帯状に配列する。鰭長は外套長の50~55%、幅は75~85%。腕に2列10~19個の鉤とその基部寄りに1~3個、先端に15~37個の小吸盤をもつ。触腕掌部には2個の鉤と5~6個の大吸盤があり、先端の吸盤列は4列約90個。眼球の発光器は単純で5個以上で数の変異がある。紅海(アカバ海)。

付記：本種およびアラビアホタルイカ、フシギホタルイカの3種のみ囀口膜は第IV腕の腹側と接続する。この科内の他種はすべて背側に接するので異例。

Mantle photophore arranged in regular longitudinal rows. Fin length 50-55%, and width 75-85% of ML, respectively. Arms with 1-3 proximal suckers followed by 10-19 hooks in two rows and 15-37 minute distal suckers. Male right Arm IV hectocotyized with elongate flap, which is divided into two parts by the middle constriction, with a triangular flap. Tentacular club with two hooks and 5-6 large suckers in manus. Dactylus suckers about 90 in four rows. Photophores on eyeball five or more, variable in number by specimen. Red Sea (Aquaba Bay). This species along with *A. marisarabica* and *A. dubia* have the buccal connectives attaching to the ventral side of Arm IV (DDVV), despite all other species of this family to the dorsal side (DDVD).

[A. 腹面 (♂24mm) ; B. 交接腕 ; C. 触腕]



A : 土屋 (2000)

インド洋 Indian Ocean

FAO名(英) : Hoyle's enope squid

ML 30mm. 外套膜および頭部の発光器配列は均質で特定のパターンを示さない。鰭長は外套長の70~75%、幅は95~105%。腕には2列19~21個の鉤と先端小吸盤をもつ。IV腕は先端に3個の球形の大型発光器をもち、先端吸盤を欠く。触腕掌部には4対の鉤をもち、背腹の列の大きさは大きく異なる。先端吸盤は4列。触腕基部の半月膜を欠き、泳膜は狭い。熱帯インド洋~西太平洋。

Photophores on ventral mantle and head diffused without regular pattern. Fin length 70-75%, and width 95-105% of ML, respectively. Arms with 19-21 hooks in two rows, and minute distal suckers. Three bulbous photophores present on tip of Arm IV lacking distal suckers. Tentacular club with four pairs of hooks in manus. Dactylus suckers in four rows. Carpal flap lacking, and swimming membrane low. Mascarene Islands, western Indian Ocean to the tropical west Pacific.

[A. 腹面]

