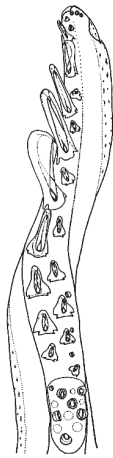
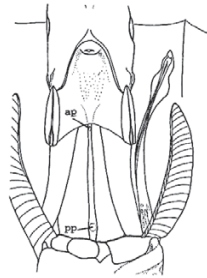


A



B



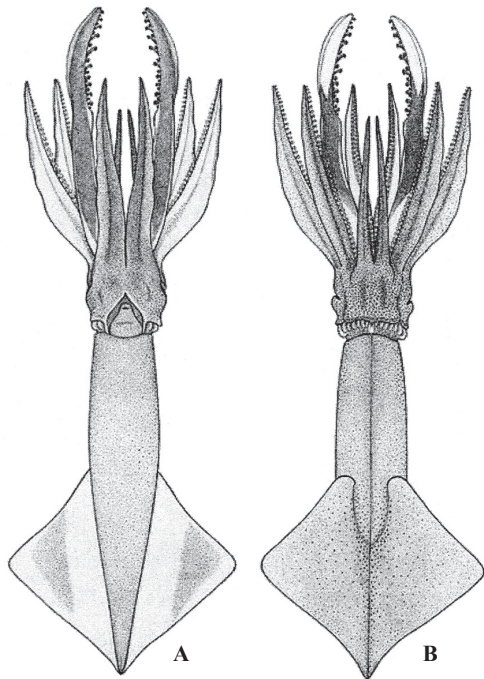
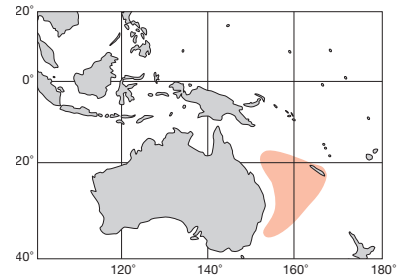
C

ML 90 mm. 尾端は尖る。鰭長は外套長の40%前後、幅は70~90%。触腕の固着器吸盤は通常6~8個、掌部の鉤は頑丈で15~19本で外套長65mmくらいまでは2~5番目の鉤列に沿って側縁吸盤が並ぶ。腹列鉤は背列鉤より大きく、4~5番目は対の背列鉤の2~3倍くらいとなる。鉤には基部小棘は無い。先端には7~11個の小吸盤がある。触腕柄口側の稜上以外には色素胞を欠く。腸上の発光器は小形で不明瞭。前部発光器は後部発光器より僅かに小さい。南西太平洋。

Tail pointed. Fin length about 40% of mantle length, width 70-90% respectively. Carpal suckers usually 6-8, manus hooks robust, 15-19 in number, marginal suckers present along second to 5th hook pairs at least ~ML 65 mm. All ventral hooks larger than dorsal ones, 4th to 5th ventral hooks 2-3 times larger than counter dorsal hooks. No basal spikes developed. Dactylus suckers 7-11. Tentacle stalk lacks chromatophores except along oral ridge. Intestinal photophores small, rather indistinct. Anterior photophore slightly smaller than posterior one. Southwest Pacific.

[A. 背面 (♂62.5mm) ; B. 触腕 ; C. 直腸上の発光器 (pp)]

A-C : Rancurel & Okutani (1990)



A

B



C

ML 150 mm. 外套膜後端と尾部腹面は色素胞で染まる。鰭は広く、鰭長は外套長の60%前後、幅は60~75%。眼球の発光器の前後縁は丸く、側縁は平行的で眼球の半周に達する。触腕の固着器吸盤は7~9個、掌部の鉤は20~23本、背列の5又は6番目は最も大きい。腹列鉤に基部小棘は無い。先端には12~18個の小吸盤がある。触腕柄は色素胞で濃色。腸上の発光器は円形で明瞭。前部発光器の直径は後部発光器の50~75%。ハワイ近海及び亜熱帯反流域の水深0~1300 m。

Ventral surface of tail with rich chromatophores. Fin length about 60% and width 60-75% of mantle length, respectively. Ocular photogenic patch with round anterior and posterior ends, parallel-sided, spanning to half of eyeball circumference. Carpal suckers 7-9, manus hooks 20-23 in number, 5th or 6th hook on dorsal row tallest. Ventral hook with no basal spikes. Dactylus suckers 12-18. Tentacle stalk with chromatophores. Intestinal photophores circular, distinct. Diameter of anterior photophore 50-75% of posterior one. Around Hawaii and the subtropical countercurrent area, 0-1300 m depth.

[A. 腹面 (♀135 mm) ; B. 同背面 ; C. 左触腕]

A-C : Bolstad (2008)

