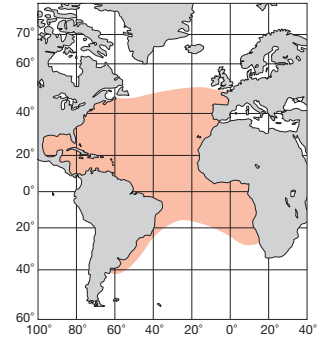


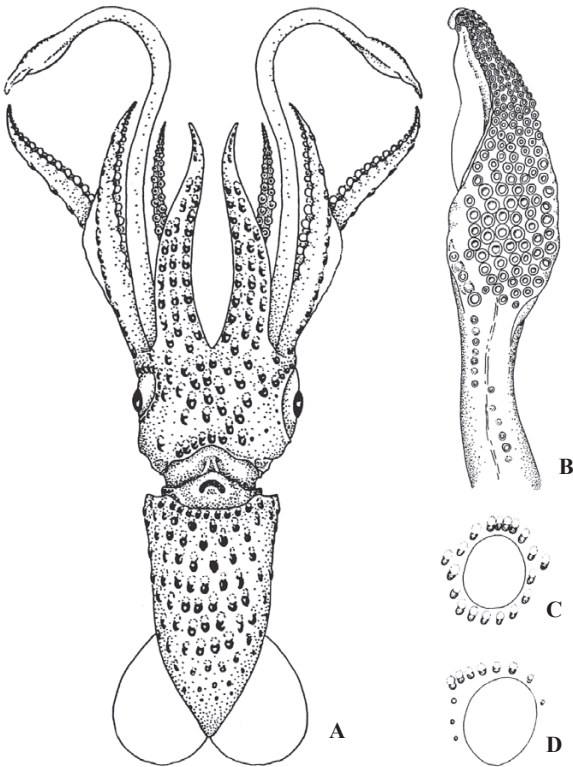
ML 50 mm. 外套膜は短かく吊鐘状。鰭は丸味があり後縁は連続している。外套膜は平滑で発光器がある。外套膜上の発光器は8斜列で、頭部の右眼瞼上の発光器は17個、左眼瞼上には7~8個。第IV腕基部発光器は3列である。触腕掌部の吸盤は5~6列で中央の吸盤はやや拡大。角質環には20~60個で鋭い円錐型である。大西洋、水深200~1,000m。

Mantle short, bell-shaped. Fins oval and continuous with both lobes on posterior margin. Surface smooth and dark purplish in color. Photophores on ventral mantle in eight diagonal rows. Photophores on right eye-lid 17, those on left 7-8, respectively, in number. Photophores on proximal Arm IV in three rows. Tentacular sucker in 5-6 rows, some of mesial rows moderately enlarged. Chitinous rings with 20-60 sharp, conical teeth. Atlantic Ocean, 200-1,000 m depth.

[A. 腹面 (♀32.6mm)]



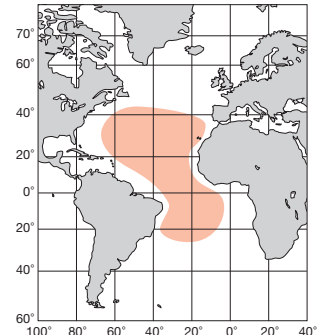
A : N. Voss (1969)



ML 26 cm. 外套膜は吊鐘形で、腹面の発光器は規則正しく並ぶが、後域では乱れる。I~III腕の吸盤環は先端部に2~3の小歯があるだけで平滑。IV腕では全縁が刻まれる。触腕掌部の吸盤は6~7列で、中央列のものがやや拡大。角質環には28~55の鋭歯がある。右眼瞼の発光器は17個。IV腕の発光器は基部では3列。I~III腕反口側皮下、先端の1/3~1/2に亘る黒色の発光器がある(成熟雄を除く)。中央大西洋、水深700~800m。

Mantle bell-shaped with regularly arranged photophores, which decrease in size with diffused small organs in posterior portion. Sucker rings of Arm I-III smooth except a few teeth on distal end, while those in Arm IV incised on entire margin. Tentacular manus with 6-7 rows of suckers, of which mesial rows are slightly enlarged. Sucker rings with 28-55 sharp teeth. Photophores on right eye-lid 17. Photophores on basal portion of Arm IV in three rows. Under skin in distal one-third to half length of Arms I-III present long black photogenic tissue (except mature male). Central Atlantic, 700-800 m depth.

[A. 腹面 (♀39mm) ; B. 触腕 ; C. 右眼 ; D. 左眼]



A-D : N. Voss (1969)