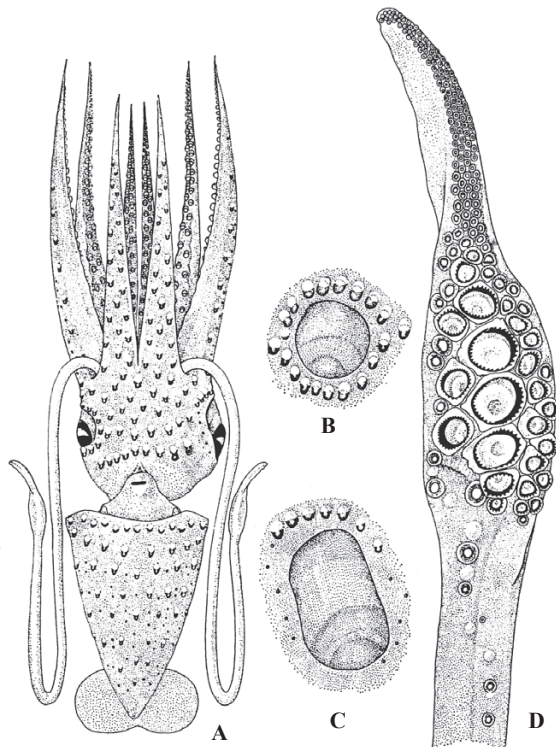
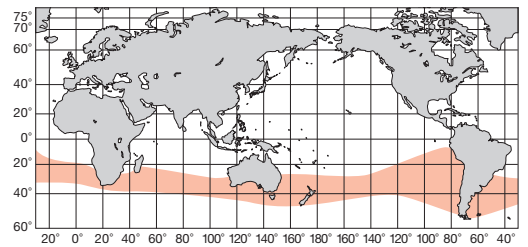


A, B : N. Voss (1969), C : N. Voss et al. (1998)

ML 25.8 cm. 外套膜腹面は疎らに大発光器がほぼ 6 斜列に並ぶが間に小さい発光器が不規則に散る。成熟雄では後部 1/2~2/3 にかけて黒色の小発光器が密集する。腕間膜は発達して最長腕の 17~30% に及ぶ。触腕は長く掌部吸盤は 6 列で、中央列の 3~4 個は著しく拡大している。右眼瞼の発光器は 18 個。IV 腕基部の発光器は 4 列。各腕の先端 1/3 に亘る黒色の楕円型の発光器を持つ。南緯 30°~50° の南大洋、水深 300~3,000 m。

Ventral mantle with six diagonal rows of large photophores interspersed by irregularly arranged small organs. In mature male, posterior half to two-thirds of dorsal and ventral mantle with dense concentration of dark small photophores. Interbrachial web developed, about 17-30% of longest arm. Tentacle long with six rows of manal suckers, of which central 3-4 are enormously enlarged. Photophores on right eye circllet 18 in number. Basal photophores on Arm IV in four rows. Each arm with black, ellipsoid light organ extending distal one-third of arm length. Southern Oceans between 30° and 50° S, 300-3,000 m depth.

[A. 背面 (♂53mm) ; B. 同腹面 ; C. 外套膜後部 (♂115mm)]



A-D : N. Voss (1969)

ML 10.5 cm. 外套膜腹面の発光器は大小混じり 6~7 斜列。IV 腕の基部発光器は 3 列。右眼瞼の発光器は 18 個。触腕掌部吸盤は 5~6 列で中央の 4 個は著しく拡大する。大吸盤角質環には 35~54 の三角形をした鈍歯がある。亜南極海の大西洋、水深 300~2,000 m。

付記：前種に似たところもあるが、腕先端の黒色発光器はなく、腕間膜は貧弱なところで異なる。N. Voss (1969) は精莢の構造と各部の比率が科内各種の分類学的標徴となることを提唱し、本種と前種の精莢各部分比率に著しい差異があるという。

Photophores on ventral mantle mixing large and small ones, in approximately 6-7 diagonal rows. Photophores on basal Arm IV in three rows. Right eye circllet with 18 photophores. Tentacle with 5-6 manal suckers, of which mesial four are enormously enlarged. Large sucker rings with 35-54 blunt triangular teeth. Subantarctic in the Atlantic sector, 300-2,000 m depth. This species somewhat similar to the preceding species, but differs in lacking terminal photophores on arms and vestigial interbrachial web. N. Voss (1969)

proposed that the structure and proportion of each part of the spermatophore are useful criteria for separating taxa within this family. On the basis of such characters this species is easily and clearly separable from the preceding species.

[A. 腹面 (♀53.3mm) ; B. 右眼 ; C. 左眼 ; D. 触腕]

