



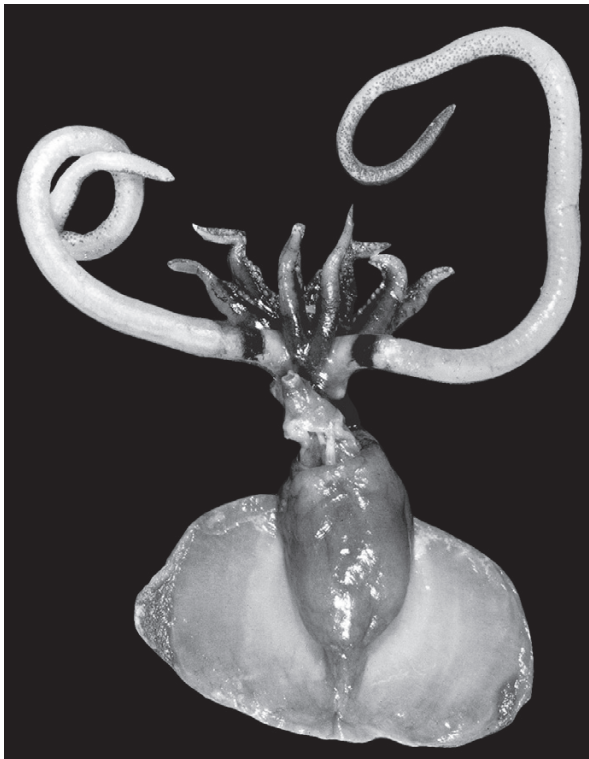
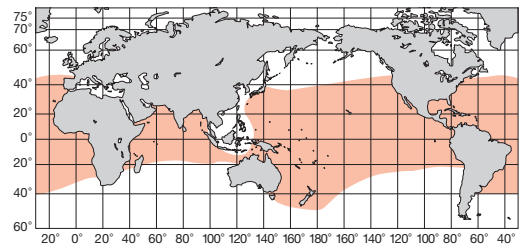
A : 久保田正 (駿河湾), B : Young & Roper (1969)

FAO名(英) : Joubin's squid

ML 85mm. 外套膜は細長い円筒形。後端から外套長に匹敵する長い尾部をもつ。鰭は楕円形。腕はIV腕を除いて長く、吸盤は基部では2列であるが、半分より先端寄りには6列になる。触腕は弱く掌部に小吸盤が不規則に並ぶ。先端方に短い泳膜がある。汎世界種。

Mantle cylindrical, with a slender tail as long as ML. Fins elliptical in outline. Arms very slender and long except Arm IV, with biserial suckers proximally, increasing into six rows in distal half. Tentacle very weak, club with irregularly arranged minute suckers. Aboral swimming membrane present. Circumglobal.

[A. 腹面 (85mm) ; B. 触腕]



A

ML 50mm. 外套膜は円錐型で短く、鰭幅は外套長の1.5倍、長さは凡そ75%。丸く、後縁は繁がる。眼は薄膜に被われる。腕は極めて短いが、それに比し触腕は太く、外套長の2倍に及ぶ。掌部は分化不完全で、凡そ1000個の吸盤が多数列配置する。付記：写真の標本はチャレンジャー号が1875年に北西太平洋から採集したもの以来2個体めで、1980年開洋丸によって採集されたやや未熟の雌。

Mantle short conical. Fins large, thick and oval, MW 1.5 times of ML and FL 75% of ML, respectively, with posterior margin connected with each other. Eyes covered with thin membrane. Arms very short, but tentacle very strong and as long as twice of ML. Club suckers not differentiated into carpus, manus and dactylus, but about 1000 minute suckers arranged rather irregularly. This specimen was collected from Northwest Pacific in 1980 by the R/V *Kaiyo-Maru*, and is the second known specimen since HMS *Challenger* collected the type specimen in 1875.

[A. 腹面 (52mm)]

